



Workforce Development Acronyms – Updated 11/4/2015 - Page 1 of 9

A/DLW/Y	Adult/Dislocated Worker/Youth
ABE	Adult Basic Education
ACSI	American Customer Satisfaction Index
ADA	American with Disabilities Act
AE	Administrative Entity
AJCC	America's Job Center of California
AMI	Average Medium Income
BC	Business Council
BLS	Bureau of Labor Statistics
BOS	Board of Supervisors
BOSP	Business Outreach Services Program
BPPE	Bureau for Private Postsecondary Education
BWF	Base Wage File
BST	Business Services Team
CalJOBS	California's online resource and database for workforce services.
CalWORKs	California Work Opportunity and Responsibilities to Kids
CAO	County Administrative Office
CAP	Client Assistance Program
CAPS	Career Ability Placement Survey
CAPSLO	Community Action Partnership of San Luis Obispo County
CBO	Community-Based Organization
CBU	Capacity Building Unit
CCPR	Central Coast Planning Region
CDE	California Department of Education



Workforce Development Acronyms – Updated 11/4/2015 - Page 2 of 9

CDP	Census Designated Place
CDSS	California Department of Social Services
CES	Current Employment Statistics <i>Also Center for Economic Studies (Federal)</i>
CETA	Comprehensive Employment & Training
CIP	Classification of Instructional Programs
CLEO	Chief Local Elected Official
CFR	Code of Federal Regulations
CHHSA	California Health & Human Services Agency
COB	Close of Business
COE	County Office of Education
COCCC	Chancellor's Office of the California Community Colleges
COLA	Cost of Living Allowance
CPS	Current Population Survey
CRD	Compliance Review Division
CRT	Classroom Training
CTI	Caregiver Training Initiative
CTTR	Construction Trades Training Roundtable
CWA	California Workforce Association
CWDB	California Workforce Development Board
CWIB	California Workforce Investment Board (now CWDB)
CY	Calendar Year
DAS	Division of Apprenticeship Standards
DET	Division of Employment & Training
DIR	Department of Industrial Relations



Workforce Development Acronyms – Updated 11/4/2015 - Page 3 of 9

DOE	Department of Education
DOL	Department of Labor (U.S. and Federal)
DOR	Department of Rehabilitation
DOT	Department of Transportation
DSS	Department of Social Services
DW	Dislocated Worker
EA	Emergency Assistance
EAP	Employee Assistance Program
EAS	Employment Assistance Services
EC	Executive Committee
ED	Economic Development
EDD	Employment Development Department
EEO	Equal Employment Opportunity
EEOC	Equal Employment Opportunity Commission
EEOP	Equal Employment Opportunity Program
EMSI	Economic Modeling Specialist International
ESL	English as a Second Language
ESOL	English for Speakers of Other Languages
ESP	Employment Services Program
ETA	Employment & Training Administration
ETP	Employment Training Panel
ETPL	Eligible Training Provider List
EVC	Economic Vitality Corporation
EWS	Early Warning System



Workforce Development Acronyms – Updated 11/4/2015 - Page 4 of 9

FA	Fiscal Agent
FBO	Faith-Based Organization
FEDES	Federal Employment Data Exchange System
FLSA	Fair Labor Standards Act
FMU	Financial Management Unit
FR	Federal Register
FSR	Feasibility Study Report
FTE	Full-time Equivalent (Employee)
FY	Fiscal Year
GAO	General Accounting Office
GCEPD	Governor's Committee on Employment of People with Disabilities
GCC	Goodwill Central Coast
GED	General Equivalency Diploma
GRP	Gross Regional Product
GSA	General Services Administration
GWI	Goodwill Industries
H&M	Henkels & McCoy
HCD	Housing and Community Development
HHS	U.S. Dept of Health & Human Services
HHSA	California Health & Human Services Agency
HUD	US Department of Housing and Urban Development
IAW	Initial Assistance Workshops
IEP	Individual Employment Plan
IFB	Invitation for Bid



Workforce Development Acronyms – Updated 11/4/2015 - Page 5 of 9

ILP	Independent Living Program
INS	Immigration and Naturalization Service
ION	Innovation and Opportunity Network
IPD	Individual Participant Data
IRC	Industry Recognized Credentials
IRS	U.S. Internal Revenue Service
ISD	Integrated Service Delivery
ISO	Information Security Officer
ISP	Individual Service Plan
ISS	Individual Service Strategy
ISY	In-School Youth
ITA	Individual Training Account
IWT	Incumbent Worker Training
LA	Layoff Aversion
LEP	Limited English Proficiency
LLSIL	Lower Living Standard Income Level
LMA	Labor Market Area
LMI	Labor Market Information
LMID	Labor Market Information Division
LQ	Location Quotient
LWDA	California Labor & Workforce Development Agency
LWDB	Local Workforce Development Board
LWIA	Local Workforce Investment Area (now Local Area)
LWIB	Local Workforce Investment Board ( <i>now LWDB</i> )



Workforce Development Acronyms – Updated 11/4/2015 - Page 6 of 9

MIS	Management Information System
MOA	Memorandum of Agreement
MOO	Memorandum of Operation
MOU	Memorandum of Understanding
MSA	Metropolitan Statistical Area
NAICS	North American Industry Classification System
NAWB	National Association of Workforce Boards
NCP	Non-Custodial Parent
NCRC	National Career Readiness Certificate
NEG	National Emergency Grant
NFA	Notice of Fund Availability
NWA	National Workforce Association
O*Net	Occupational Information Network
OCTAE	Office of Career, Technical, and Adult Education ( <i>Federal</i> )
ODEP	Office of Disability Employment Policy
OES	Occupational Employment Statistics
OET	Office for Employment Training
OIG	U.S. Office of Inspector General
OJT	On-the-Job Training
OL	Organized Labor
OMB	Office of Management and Budget
OSERS	Office of Special Education and Rehabilitative Services ( <i>Federal</i> )
OSHA	Occupational Safety & Health Admin
OST	Occupational Skills Training



Workforce Development Acronyms – Updated 11/4/2015 - Page 7 of 9

OSY	Out-of-School Youth
PA	Public Assistance
PDMD	Program Development & Mgmt Division
PIC	Private Industry Council
PS	Private Sector
PY	Program Year
QCEW	Quarterly Census of Employment and Wages
REA	Re-employment Assessments
RFP	Request for Proposal
RFO	Request for Qualifications
RR	Rapid Response
SALT	State-Approved Local Training
SBA	Small Business Administration
SBDC	Small Business Development Center
SDI	State Disability Insurance
SFP	Solicitation for Proposal
SIC	Standard Industrial Classification System <i>(replaced by NAICS)</i>
SLOPE	San Luis Obispo Partnerships in Education
SOC	Standard Occupational Classification System
SOP	Standard Operating Procedure
SSA	Social Security Administration/Agency
TA	Technical Assistance
TAA	Trade Adjustment Assistance
TABE	Tests of Adult Basic Education



Workforce Development Acronyms – Updated 11/4/2015 - Page 8 of 9

TAG	Technical Assistance Guide
TANF	Temporary Assistance to Needy Families
TEGL	Training & Employment Guidance Letter
TEIN	Training & Employment Information Notice
TEN	Training & Employment Notice ( <i>different than above</i> )
TQM	Total Quality Management
TRA	Trade Readjustment Allowance
UC	Unemployment Compensation
UCS	Unemployment Compensation System
UI	Unemployment Insurance
UIB	Unemployment Insurance Benefits
UIC	Unemployment Insurance Claimant
USC	United States Code
VA	Veterans Administration or U.S. Department of Veterans Affairs
VETS	Veterans' Employment and Training Service
WARN	Worker Adjustment and Retraining Notification Act
WDS	Workforce Development System
WEX	Work Experience
WIA	Workforce Investment Act of 1998 ( <i>Now WIOA</i> )
WIAC	Workforce Information Advisory Council ( <i>Federal</i> )
WDB	Workforce Development Board
WIB	Workforce Investment Board ( <i>Now WDB</i> )
WIC	Women, Infants and Children Program
WIOA	Workforce Innovation and Opportunity Act

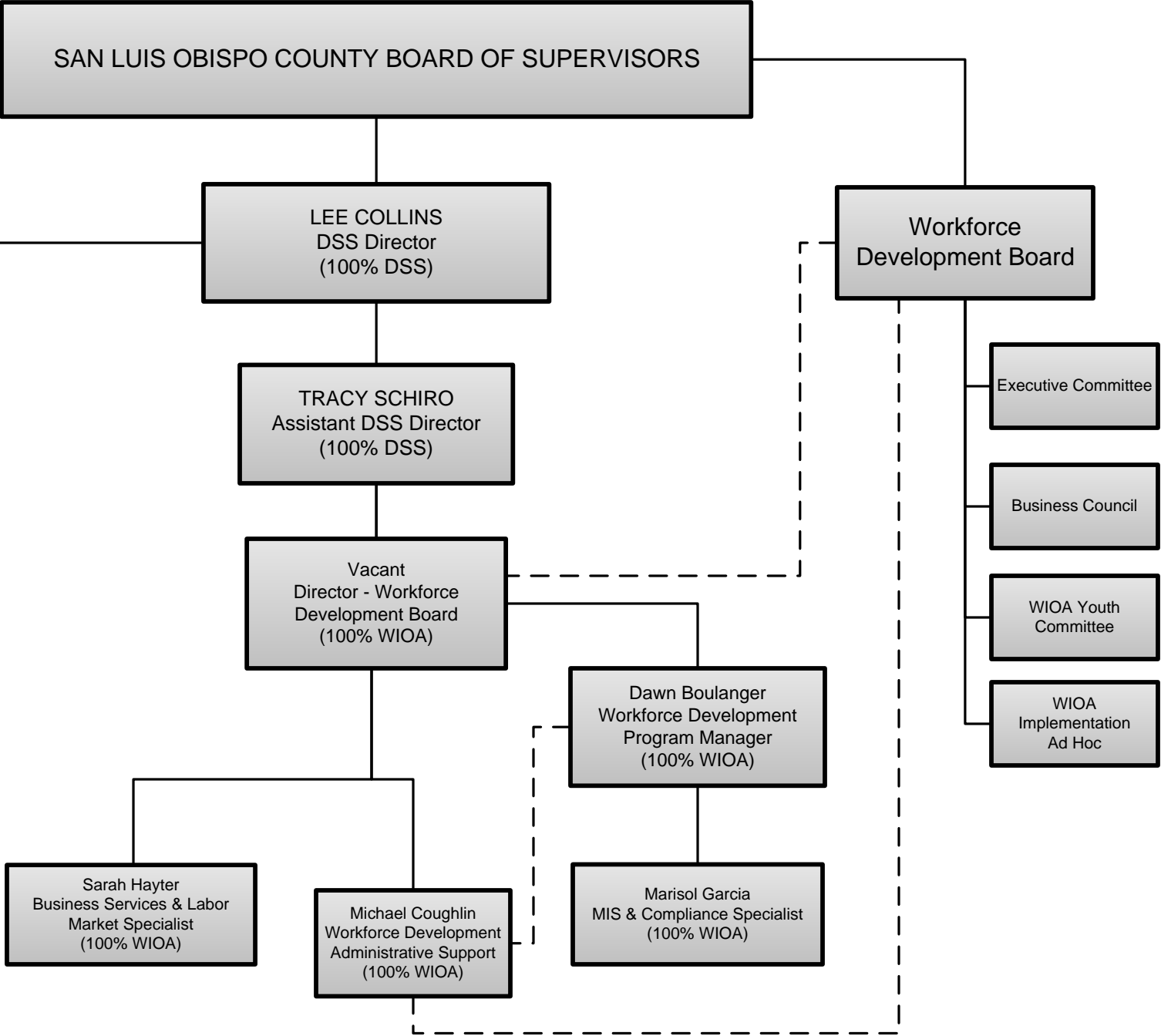




---

Workforce Development Acronyms – *Updated 11/4/2015 - Page 9 of 9*

WOTC	Work Opportunity Tax Credit
WP	Wagner Peyser
WRC	Work Ready Community
WtW	Welfare-to-Work
YC	Youth Committee
YOA	Year of Allocation



San Luis Obispo County  
Workforce Development  
Organizational Chart  
PY 2015-2016